

# GURUKUL MAHILA ARTS AND COMMERCE COLLEGE

## INFRASTRUCTURE FACILITIES

### 01-PLAN

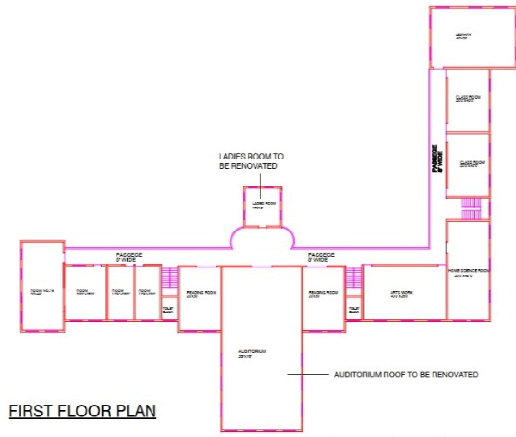


GROUND FLOOR PLAN

LAYOUT PLAN OF MAHILA COLLEGE, AT  
PORBANDAR

ARCHITECT-AKASH M.VITHALANI  
DEVELOPMENT CONSULTANTS  
OPP. HARISH TALKIES, NEAR SUB POST OFFICE,  
MAJARSHI DAYANANDA SARASWATI MARG,  
PORBANDAR,  
MOR. GUJARAT-382017, INDIA-382017

SCALE: 1/8" = 1'-0"



FIRST FLOOR PLAN

LAYOUT PLAN OF MAHILA COLLEGE AT  
PORBANDAR

ARCHITECT-AKASH M.VITHALANI  
DEVELOPMENT CONSULTANTS  
OPP. HARISH TALKIES, NEAR SUB POST OFFICE,  
MAJARSHI DAYANANDA SARASWATI MARG,  
PORBANDAR,  
MOR. GUJARAT-382017, INDIA-382017

SCALE: 1/8" = 1'-0"

## 02-PLAN

# PHYSICAL INFRASTRUCTURE

TOTAL AREA:4.46 acres.

- **ACADEMIC BLOCK:** Class Rooms (17)
- **LABORATORIES & COMPUTER LAB:** Arts (Dell:01) & Home-Science Laboratories (03), Computer Lab. (01).
- **ADMINISTRATIVE BLOCK:** Principal's Chamber, Admin Office & Accounts Section
- **LEARNING CENTRES:** Community College (NSQF)
- **GH & HOSTEL:** Guest House (01) & Hostel: Girls (01)
- **SPORTS FACILITY:** Indoor Games, Cricket Pitch, Basket Ball/Volley-Ball court, Tracks, High/Long-Jump Pit
- **CONFERENCE HALL:** AV Room- 150 capacity
- **COMMON ROOM:** Teachers
- **OTHER FACILITIES:**
  - **Grievance Redressal Cell, Canteen, Office, Morning Assembly Hall, Garden, 05 Store-rooms**



ARSNayab  
Principal,  
Gurukul Mahila Arts & Commerce College  
PORBANDAR